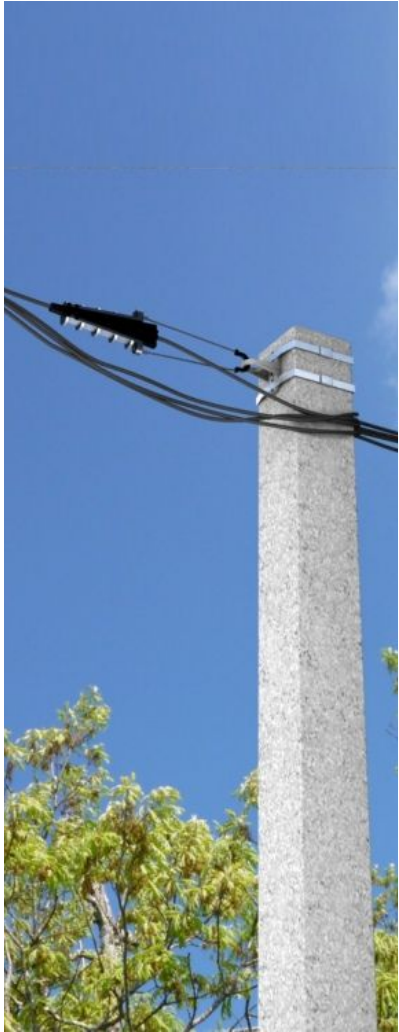




Anchoring Clamps



Standard use/Application



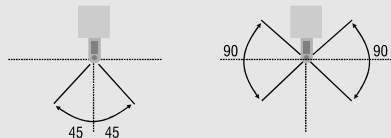
To terminate in to transformer leads or mains for industrial / residential supply.



To provide angle up to 90° to the line.

Application Angle :

Maximum line deviation angle Of 45° for single and 90° for double anchoring:



Axis Anchoring Clamps(ACI) for Insulated Neutral Messenger System consists of a body, self-adjusting captive wedges and flexible bail. This product is used along with a bracket or other supporting hardware (as a customized option), and is used to strain the insulated neutral messenger and also to provide angles of a LV-ABC system without damaging the cable's insulation.

The clamp and bracket are available separately or factory-assembled.

Features:

- Materials:
 - Body : High strength cast aluminum alloy.
 - Wedges : UV and weather resistant engineering-plastic.
 - Bail : Corrosion resistant flexible stainless steel wire
- Single clamp with a bracket used for straining.
- Two clamps with a bracket used for large angle assembly.
- Exceeds requirements of NF C 33-041
- With stand extreme conditions
- Ease of installation without tools
- Engineering plastics provides additional insulation and enables live line working



ACI1



ACI2



ACI3



ABI 1



ABI 2



EA 1500

Product Code	Product Range	Conductor Dia (ref.)	Breaking Load (kN)	Pkg Qty
ACI1 2535	25-35mm ²	8.6-10.9 mm	05	60
ACI2 2535	25-35mm ²	8.6-10.9 mm	15	30
* ACI2 1500	54.6-70mm ²	12.3-13.6 mm	15	30
ACI3 5095	54.6-70(95) mm ²	12.3-13.6 (15.0) mm	20	30

Bracket Features:

- High strength Corrosion resistant aluminum alloy.
- Mounting by M14 or M16 bolts or by using 20x0.7mm SS Straps.
- 1 or 2 Anchoring Clamps can be mounted.

Product Code	Swivel Angle	Breaking Load	Pkg Qty
ABI 1	45° for single anchoring 90° for double anchoring	10 KN	60
* ABI 2 1500	45° for single anchoring 90° for double anchoring	15 KN	60

* Standard product in accordance with NFC 33-041 can be ordered as EA 1500 = ACI2 1500 + ABI 2 1500
Note: Bolts, Straps and Ties to be ordered separately