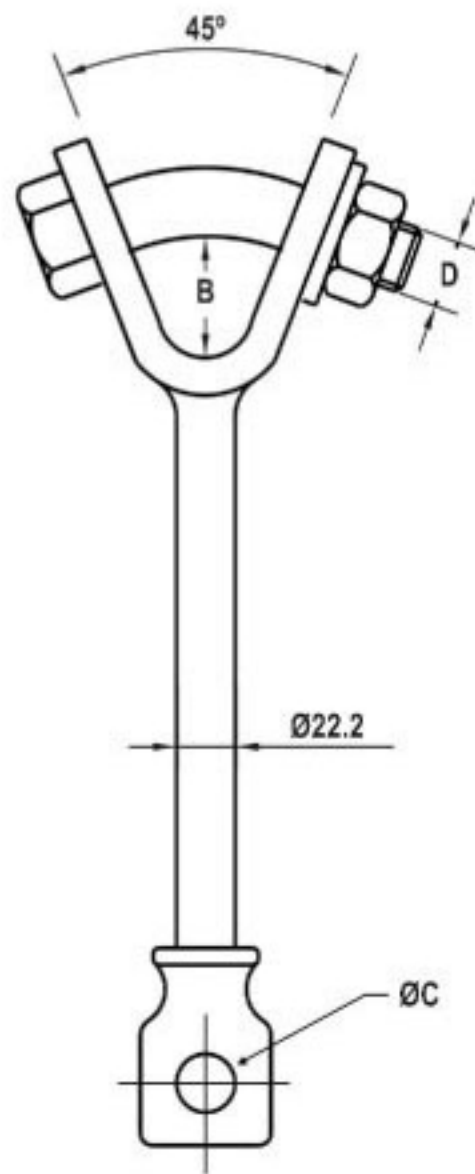
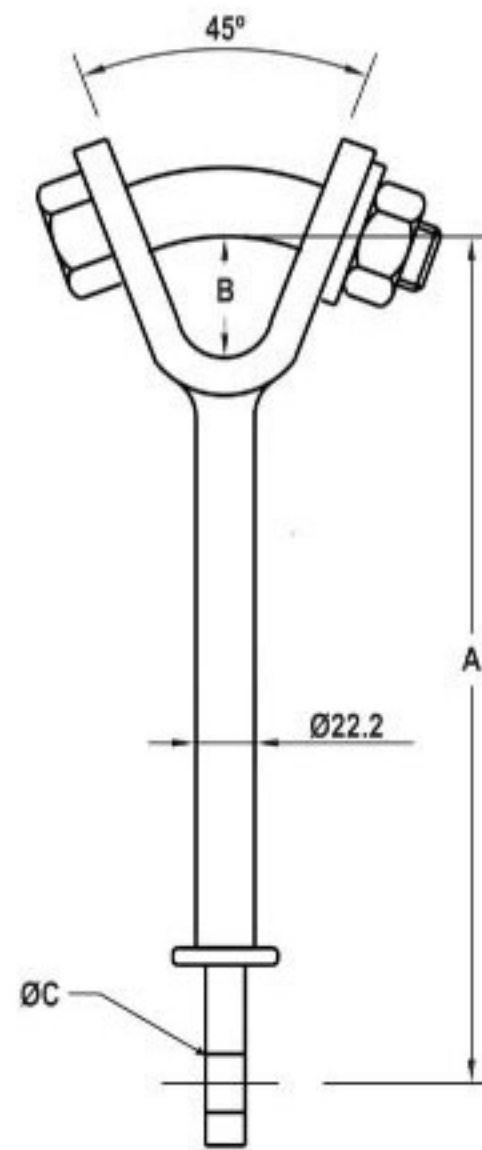


Material : Forged Steel
 Finish : Hot dip galvanised to BS 729

Hot Line Y- Clevis Eye



Type-1



Type-2

Type	A mm	B mm	C mm	D mm	Rating Kg	Cat. #
1	200	42	18	M20	6,800	HLYCE01
1	279	42	18	M20	13,600	HLYCE02
2	200	42	18	M20	6,800	HLYCE03
2	279	42	18	M20	13,600	HLYCE04