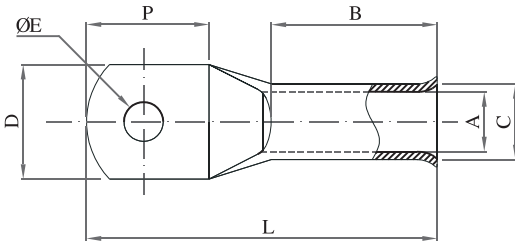


COMPRESSION CABLE LUGS - HEAVY DUTY, LONG BARREL - BELL MOUTHED



- MATERIAL : E-COPPER
- FINISH : ELECTRO-TINNED
- FEATURES : BELL MOUTHED ENTRY, WITH INSPECTION HOLE
- SUITABILITY : FOR STRANDED TO FINE STRANDED COPPER CABLE

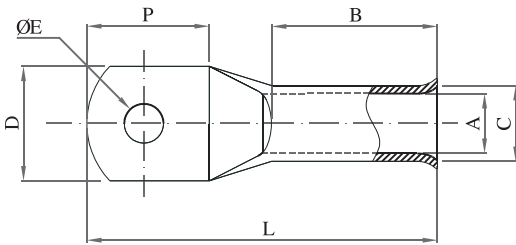


CABLE mm ²	ØE	DIMENSIONS IN mm						E - CODE
		A	C	D	P	B	L	
10	5.2	4.5	6.9	12	14	10	27	ATHB0010M05
	6.2				14			ATHB0010M06
	8.2				16			ATHB0010M08
	10.5			20	ATHB0010M10			
	13			24	ATHB0010M12			
16	5.2	5.9	8	12	15	19	38	ATHB0016M05
	6.2				16			ATHB0016M06
	8.2				17			ATHB0016M08
	10.5			26.5	ATHB0016M10			
	13			49	ATHB0016M12			
25	6.2	7	9.7	14	16	22	41	ATHB0025M06
	8.2				19			ATHB0025M08
	10.5			23	ATHB0025M10			
	13			49	ATHB0025M12			
35	6.2	8.4	11.5	16	19	22	45	ATHB0035M06
	8.2				23.5			ATHB0035M08
	10.5			52	ATHB0035M10			
	13			52	ATHB0035M12			
50	6.2	9.5	12.7	18	20	22	48	ATHB0050M06
	8.2							ATHB0050M08
	10.5							ATHB0050M10
	13							ATHB0050M12
70	8.2	11.1	14.3	21	22.5	22	52	ATHB0070M08
	10.5							ATHB0070M10
	13							ATHB0070M12
	17			25	33			62

COMPRESSION CABLE LUGS - HEAVY DUTY, LONG BARREL - BELL MOUTHED



- MATERIAL : E-COPPER
- FINISH : ELECTRO-TINNED
- FEATURES : BELL MOUTHED ENTRY, WITH INSPECTION HOLE
- SUITABILITY : FOR STRANDED TO FINE STRANDED COPPER CABLE



CABLE mm ²	ØE	DIMENSIONS IN mm						E - CODE
		A	C	D	P	B	L	
95	8.2	13.5	17.5	25	27	23	52	ATHB0095M08
	10.5							ATHB0095M10
	13				ATHB0095M12			
	17				33		62	ATHB0095M16
120	8.2	15.5	20.6	29	29	30	68	ATHB0120M08
	10.5							ATHB0120M10
	13				ATHB0120M12			
	17				32		73	ATHB0120M16
150	10.5	16.3	22.2	31	34	30	76	ATHB0150M10
	13							ATHB0150M12
	17							ATHB0150M16
185	10.5	18.3	24.3	34	35	30	80	ATHB0185M10
	13							ATHB0185M12
	17							ATHB0185M16
	21							ATHB0185M20
240	10.5	21.2	28.6	40	41	40	97	ATHB0240M10
	13							ATHB0240M12
	17							ATHB0240M16
	21							ATHB0240M20
300	10.5	23.8	31.9	45	46	45	105	ATHB0300M10
	13							ATHB0300M12
	17							ATHB0300M16
	21							ATHB0300M20