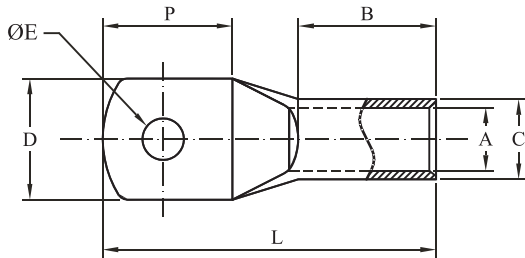


COMPRESSION CABLE LUGS - HEAVY DUTY, LONG BARREL



MATERIAL : E-COPPER
 FINISH : ELECTRO-TINNED
 FEATURES : WITH INSPECTION HOLE

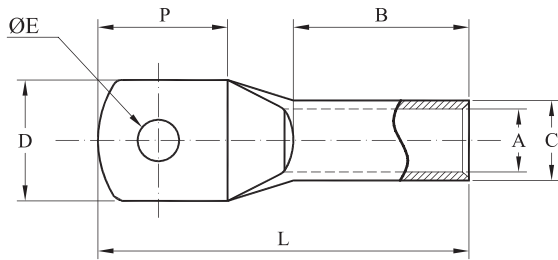


CABLE mm ²	ØE	DIMENSIONS IN mm						PER BOX	E - CODE
		A	C	D	P	B	L		
1.5	4.2	1.8	3.7	8	9	7	18	2000	ATH0001M04
	5.2			9	10		19		ATH0001M05
	6.2			11	20		ATH0001M06		
2.5	3.2	2.4	4	8	9	7	18	2000	ATH0002M03
	4.2				10				ATH0002M04
	5.2			10	12	9	20		ATH0002M05
	6.2								16
4	4.2	3.1	4.8	11	12	9	22	2000	ATH0004M04
	5.2				16				11
	6.2			12	11	9	22		ATH0004M06
	8.2								11
6	4.2	3.8	5.5	10	11	12	26	1000	ATH0006M04
	5.2				12		16		12
	6.2			17		23			
	8.2			17	23	39	ATH0006M08		
10	5.2	4.5	6.9	12	14	11	28	1000	ATH0010M05
	6.2				16		11		28
	8.2			20		30			
	10.5			17	24	11	35		ATH0010M10
	13						38		ATH0010M12
16	5.2	5.9	8	12	15	20	39	500	ATH0016M05
	6.2				17		26		20
	8.2			50		ATH0016M08			
	10.5			50	ATH0016M10				
25	6.2	7	9.7	14	16	23	42	300	ATH0025M06
	8.2				19		23		23
	10.5			50		ATH0025M10			
	13			50	ATH0025M12				
35	6.2	8.4	11.5	16	19	23	46	200	ATH0035M06
	8.2				19		27		23
	10.5			53		ATH0035M10			
	13			63	ATH0035M12				
50	6.2	9.5	12.7	18	20	23	49	150	ATH0050M06
	8.2				22		26		23
	10.5			55		ATH0050M10			
	13			55	ATH0050M12				
70	6.2	11.1	14.3	20	23	24	54	100	ATH0070M06
	8.2				25		33		24
	10.5			28		44			
	13				64		ATH0070M12		
	17			64	ATH0070M14				
21	77	ATH0070M16							

COMPRESSION CABLE LUGS - HEAVY DUTY, LONG BARREL



MATERIAL : E-COPPER
 FINISH : ELECTRO-TINNED
 FEATURES : WITH INSPECTION HOLE



CABLE mm ²	ØE	DIMENSIONS IN mm						PER BOX	E - CODE
		A	C	D	P	B	L		
95	6.2	13.5	17.5	25	27	25	60	75	ATH0095M06
	8.2								ATH0095M08
	10.5				ATH0095M10				
	13				ATH0095M12				
	14				ATH0095M14				
120	17	15.5	20.6	29	33	32	65	50	ATH0095M16
	8.2				ATH0120M08				
	10.5				ATH0120M10				
	13				ATH0120M12				
	14				ATH0120M14				
150	17	16.3	22.2	31	32	32	75	40	ATH0120M16
	21				84		ATH0120M20		
	10.5				ATH0150M10				
	13				ATH0150M12				
	14				ATH0150M14				
185	17	18.3	24.3	34	35	32	82	30	ATH0150M16
	21								ATH0150M20
	13								ATH0185M12
	14								ATH0185M14
	17								ATH0185M16
240	21	21.2	28.6	40	41	42	99	20	ATH0185M20
	10.5								ATH0240M10
	13								ATH0240M12
	14								ATH0240M14
	17								ATH0240M16
300	21	23.8	31.9	45	45	47	107	15	ATH0240M20
	BLANK								ATH0240MBL
	13								ATH0300M12
	14								ATH0300M14
	17								ATH0300M16
400	21	27.5	35.5	49	51	48	113	10	ATH0300M20
	BLANK								ATH0300MBL
	17								ATH0400M16
500	21	30	38	55	60	50	130	5	ATH0400M20
	BLANK								ATH0400MBL
	17								ATH0500M16
630	17	34.5	44	64	65	57	146	5	ATH0500M20
	12								ATH0630M16
	BLANK								ATH0630MBL
800	17	39	50.6	72	77	78	176	1	ATH0630M20
	21								ATH0800M16
	BLANK								ATH0800MBL
1000	17	43	56.2	80	90	90	200	1	ATH0800M20
	21								ATH1000M16
	27								ATH1000M20
	BLANK								ATH1000M25
									ATH1000MBL