

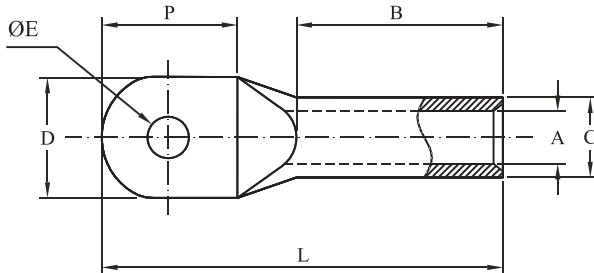
COMPRESSION CABLE LUGS - DIN STANDARD

STANDARD : DIN 46235

MATERIAL : E-COPPER

FINISH : ELECTRO-TINNED

FEATURES : WITHOUT INSPECTION HOLE



| CABLE mm ² | ØE | DIMENSIONS IN mm | | | | | | PER BOX | E - CODE | |
|--------------------------|------|------------------|------|----|------|-----|-----|---------|------------|------------|
| | | A | C | D | P | B | L | | | |
| 10 | 6.4 | 4.5 | 7 | 9 | 16 | 10 | 35 | 400 | ATD0010M06 | |
| | 8.4 | | | 13 | 20 | | 37 | | ATD0010M08 | |
| 16 | 6.4 | 5.5 | 8.5 | 13 | 15.5 | 20 | 44 | 150 | ATD0016M06 | |
| | 8.4 | | | | 20 | | 46 | | ATD0016M08 | |
| 25 | 6.4 | 7 | 10 | 14 | 15.5 | 20 | 46 | 150 | ATD0025M06 | |
| | 8.4 | | | 16 | 20 | | 48 | | ATD0025M08 | |
| 35 | 8.4 | 8.2 | 12.5 | 17 | 20 | 20 | 54 | 100 | ATD0035M08 | |
| | 10.5 | | | 19 | 24 | | | | ATD0035M10 | |
| | 13 | | | 21 | 26 | | | | ATD0035M12 | |
| 50 | 8.4 | 10 | 14.5 | 20 | 20 | 28 | 64 | 75 | ATD0050M08 | |
| | 10.5 | | | 22 | 24 | | | | ATD0050M10 | |
| | 13 | | | 24 | 26 | | | | ATD0050M12 | |
| 70 | 8.4 | 11.5 | 16.5 | 24 | 20 | 28 | 67 | 50 | ATD0070M08 | |
| | 10.5 | | | | 24 | | | | 26 | ATD0070M10 |
| | 13 | | | | 26 | | | | 28 | ATD0070M12 |
| 95 | 10.5 | 13.5 | 19 | 28 | 24 | 35 | 78 | 50 | ATD0095M10 | |
| | 13 | | | 26 | 28 | | | | ATD0095M12 | |
| 120 | 10.5 | 15.5 | 21 | 32 | 31 | 35 | 86 | 25 | ATD0120M10 | |
| | 13 | | | | 33 | | | | 35 | ATD0120M12 |
| | 17 | | | | 39 | | | | 39 | ATD0120M16 |
| 150 | 10.5 | 17 | 23.5 | 34 | 31 | 35 | 94 | 25 | ATD0150M10 | |
| | 13 | | | | 33 | | 97 | | ATD0150M12 | |
| | 17 | | | | 39 | | 97 | | ATD0150M16 | |
| 185 | 10.5 | 19 | 25.5 | 37 | 31 | 40 | 98 | 20 | ATD0185M10 | |
| | 13 | | | | 33 | | 101 | | ATD0185M12 | |
| | 17 | | | | 39 | | 101 | | ATD0185M16 | |
| 240 | 13 | 21.5 | 29 | 42 | 33 | 40 | 108 | 10 | ATD0240M12 | |
| | 17 | | | | 39 | | 111 | | ATD0240M16 | |
| | 21 | | | | 43 | | 113 | | ATD0240M20 | |
| 300 | 17 | 24.5 | 31 | 48 | 40 | 50 | 122 | 10 | ATD0300M16 | |
| | 21 | | | | | | | | 48 | 122 |
| 400 | 17 | 27.5 | 38.5 | 54 | 50 | 70 | 140 | 5 | ATD0400M16 | |
| | 21 | | | | | | | | 54 | 140 |
| 500 | 17 | 31 | 42 | 60 | 50 | 70 | 150 | 5 | ATD0500M16 | |
| | 21 | | | | | | | | 60 | 150 |
| 630 | 17 | 34 | 44 | 62 | 50 | 80 | 160 | 5 | ATD0630M16 | |
| | 21 | | | | | | | | 62 | 160 |
| 800 | 21 | 40 | 52 | 75 | 60 | 100 | 195 | 1 | ATD0800M20 | |
| | 27 | | | | | | | | 75 | 195 |
| 1000 | 21 | 44 | 58 | 85 | 60 | 100 | 195 | 1 | ATD1000M20 | |
| | 27 | | | | | | | | 85 | 195 |