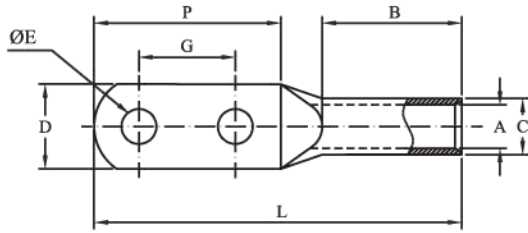


COMPRESSION CABLE LUGS, WITH TWO HOLES

MATERIAL : E-COPPER

FINISH : ELECTRO-TINNED

FEATURES : WITH / WITHOUT INSPECTION HOLE



CABLE mm ²	ØE	DIMENSIONS IN mm							PER BOX	E - CODE
		A	C	D	G	P	B	L		
16	10.5	5.4	7.1	15	40	64	15	84	40	AT2E1610
25	10.5	6.8	8.8	18	40	64	15	87	35	AT2E2510
35	10.5	8.2	10.6	18	40	66	17	90	30	AT2E3510
50	13	9.5	12.4	22.5	40	66	27.5	102	25	AT2E5012
70	13	11.1	14.3	24	40	67	30	107	20	AT2E7012
95	13	13.5	17.4	26	40	67	33	111	20	AT2E9512
120	13	15	19.4	28	40	70	36	118	15	AT2E12012
150	13	16.5	21.2	31	40	72	44	130	15	AT2E15012
185	13	18.5	23.5	35	40	76	55	149	10	AT2E18512
240	13	21	26.5	38	40	78	55	150	10	AT2E24012
300	13	23.5	30	42	40	84	55	160	5	AT2E30012
400	13	27.5	35.5	52	40	80	62	165	3	AT2E40012
500	13	30	37	55	40	80	62	165	3	AT2E50012
630	13	34	41	60	40	82	70	180	3	AT2E63012

DIMENSION 'G' AS PER REQUIREMENT ALSO AVAILABLE, OTHER HOLE SIZES AVAILABLE