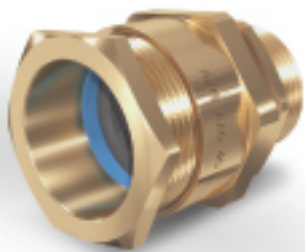


A1/A2 Industrial Cable Gland

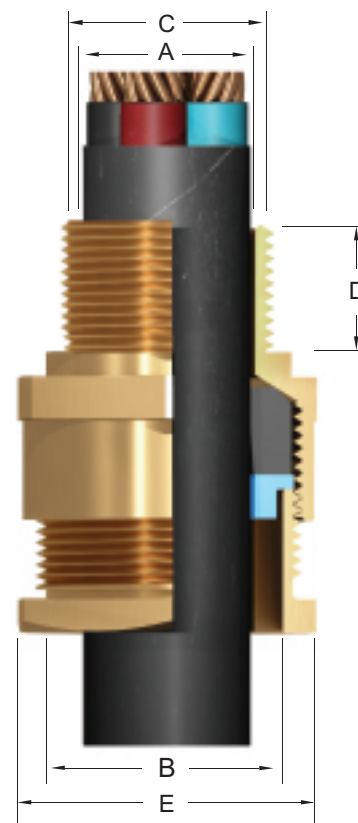


Brass indoor and outdoor cable gland highly suitable for all types of unarmoured cables, plastic or rubber sheathed cables. This gland provides a seal on outer sheath.

Recommended to use PVC shroud for additional ingress protection.

TECHNICAL DATA

Type	A1/A2
Design Specification	BS 6121 : Part I : 1989
Ingress protection	IP66
Gland Material	Brass
Finish	Plain Brass or Nickel Plated
Seal Material	Thermoplastic Elastomer
Cable Type	Unarmoured
Sealing Technique	Displacement Type
Sealing Area	Outer Sheath



Gland Size	CABLE DIMENSIONS ACCOMODATED		GLAND DIMENSIONS					E- CODE
	Overall Diameter		Dia 'A'	Dia 'B'	Metric Entry Thread 'C'	Minimum Thread Length 'D'	Across Flat 'E' Max	
	Min	Max						
16	3.5	8.5	10.0	12.0	16	15	21.30	AAG0016B
20SS	3.5	8.5	10.0	15.4	20	15	23.60	AAG0020SSB
20S	8.0	11.5	11.9	15.4	20	15	23.60	AAG0020SB
20L	11.0	13.5	14.5	17.9	20	15	26.85	AAG0020LB
25S	13.0	16.5	16.5	20.3	25	15	30.50	AAG0025SB
25L	13.0	19.5	20.7	27.4	25	15	35.50	AAG0025LB
32	19.0	25.5	26.9	31.7	32	15	41.30	AAG0032LB
40L	25.0	32.0	32.5	37.1	40	15	47.00	AAG0040LB
50S	31.5	37.0	38.6	44.2	50	15	55.00	AAG0050SB
50L	36.5	43.0	44.0	48.9	50	15	59.95	AAG0050LB
63S	42.5	50.0	50.3	56.1	63	15	64.75	AAG0063SB
63L	49.5	55.0	56.4	60.2	63	15	69.85	AAG0063LB
75S	54.5	61.0	62.2	62.2	75	15	78.75	AAG0075SB
75L	60.5	67.0	68.3	73.1	75	15	84.60	AAG0075LB
90	65.0	78.0	80.3	80.3	90	20	102.60	AAG0090LB
100	75.0	88.0	90.0	91.6	100	25	119.10	AAG0100LB

Dimensions in Millimeters